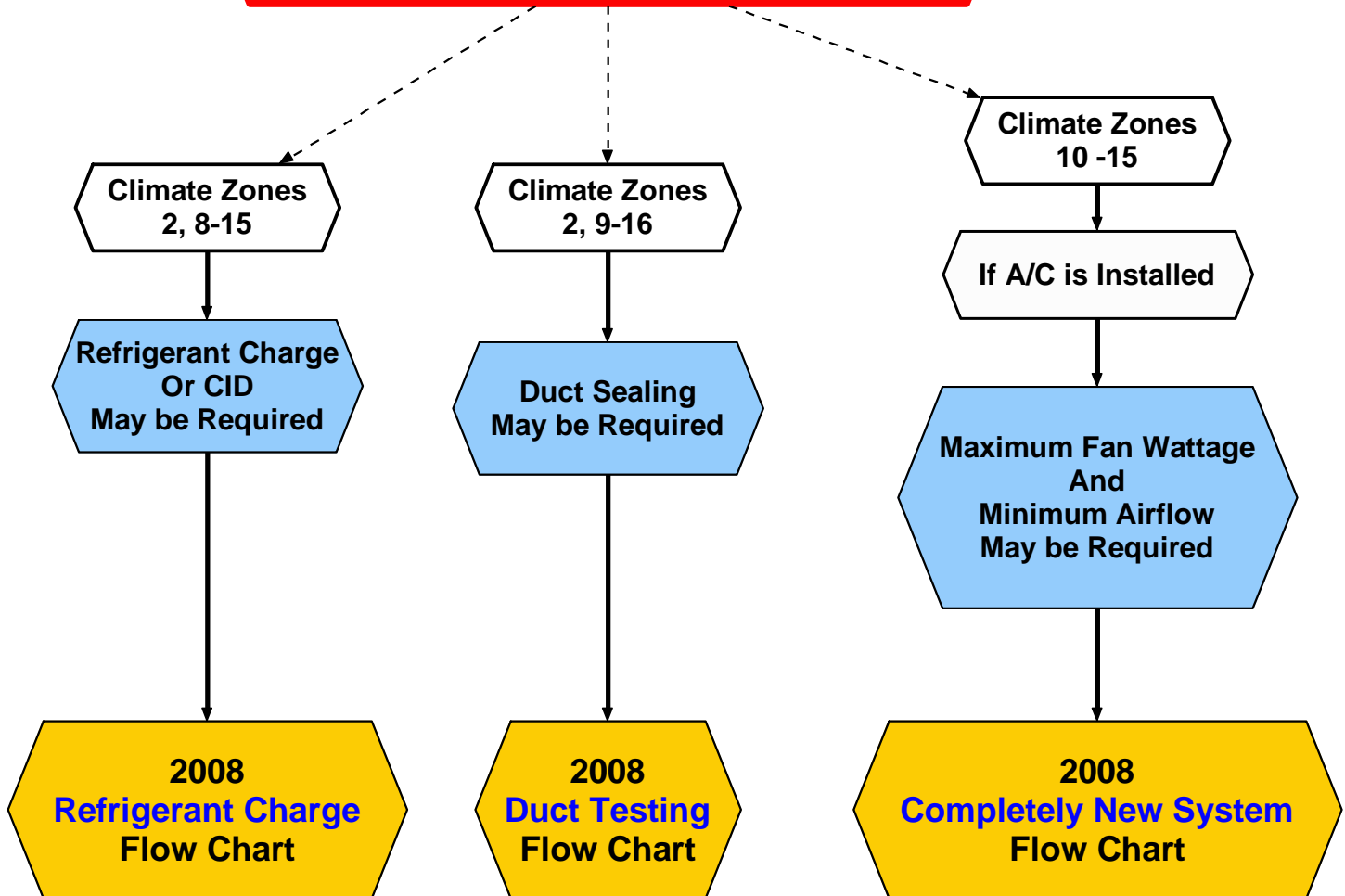


# 2008 Residential HVAC Change-Outs Flow Chart Guide

For Building Permits applied for on or after 1/01/2010

Copyright D&H Climate Control 2010

**Choose All that Apply to the Job**



These Flowcharts are provided for informational purposes only.  
D&H Climate Control makes no warranty or guarantee as to the  
accuracy of the data contained within.  
USE AT YOUR OWN RISK

Contact your local building department about additional requirements.

Rev. 10.2.12

For more information go to <http://hersrater.net>

# 2008 Residential HVAC Change-Outs

## Refrigerant Charge

Were Building Permits applied for on or after 1/01/2010

YES

Is the job in Climate Zone  
2, 8, 9, 10, 11, 12, 13, 14, or 15

NO

YES

Job includes adding or replacing  
*any* of the following components:  
Air Handler (Any FAU)  
Heat Exchanger  
Heat pump  
Indoor Coil.  
Outdoor condenser unit.

NO

YES

Package unit  
or  
Mini split ductless

Copyright D&H Climate Control 2010

This Flowchart is provided as is for informational purposes only.  
D&H Climate Control makes no warranty or guarantee as to the  
accuracy of the data contained within.  
USE AT YOUR OWN RISK

NO

Refrigerant Charge  
Or CID  
is Required

YES

OR

For CID use  
CF-6R-MECH-24-HERS

Refrigerant  
Charge Measurement  
is Not Required

OR

For Refrigerant Charge use  
CF-6R-MECH-25-HERS

OR

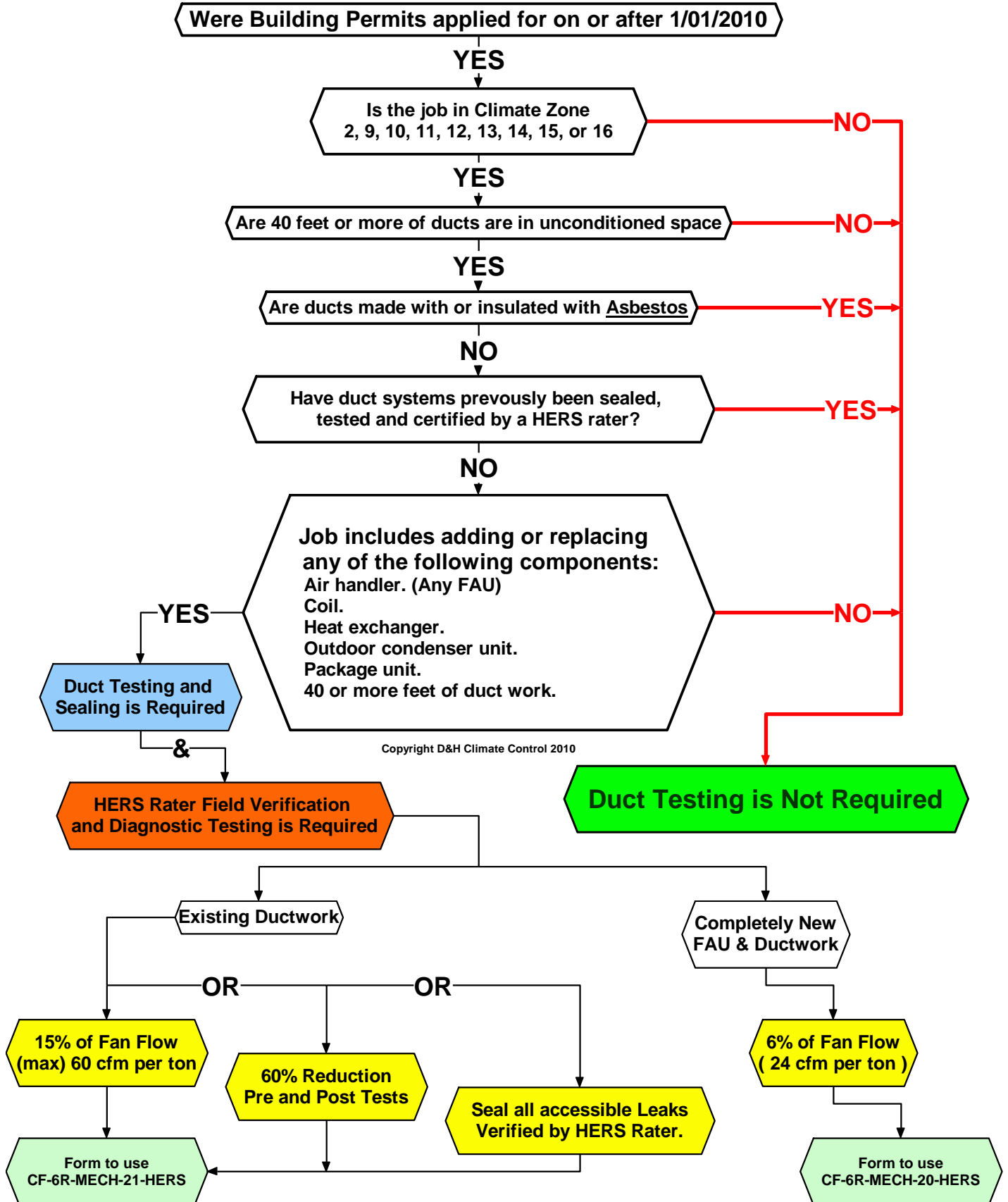
Alternate Form  
Use if outdoor air dry-bulb is Below 55 °F  
CF-6R-MECH-26-HERS

HERS Rater  
Refrigerant Charge Measurement  
Verification is Required

Contact your local building department about additional requirements.

# 2008 Residential HVAC Change-Outs

## Duct Testing Flow Chart



Contact your local building department about additional requirements.

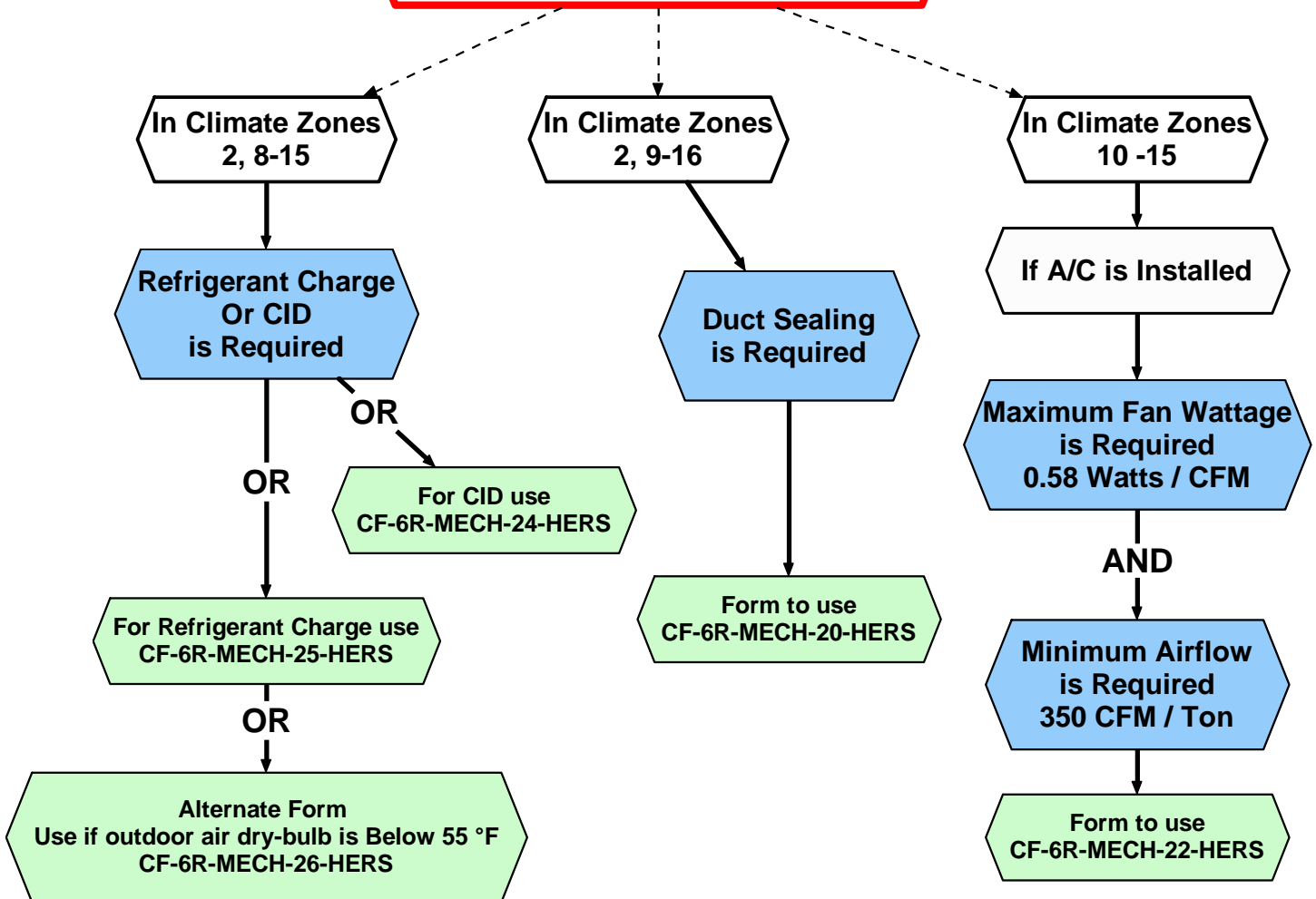
# 2008 Residential HVAC Change-Outs Completely New System

Equipment, Ducts, etc.

For Building Permits applied for on or after 1/01/2010

Copyright D&H Climate Control 2010

Choose All that Apply to the Job



**HERS Rater  
Field Verification is Required  
For All Above Tests**

Contact your local building department about additional requirements.